

# Mounty® 90 H

Portable Drill Feeds



INOX

## Avalanche construction and renovations

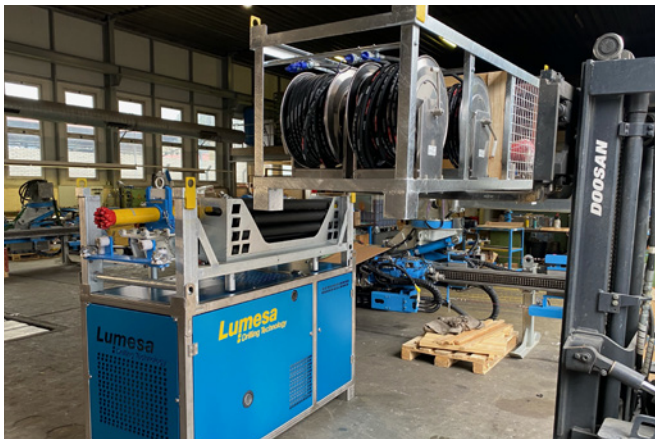
Portable hydraulic drill feed, ideal for all handy drilling work; can be used with down-the-hole hammer and drill hammer (pneumatic or hydro-pneumatic) as well as for core drilling. Designed for easy mounting on any type of scaffolding and suitable for wall work. Very light and handy.

### Lightweight drill feed for:

- scaffolding
- nailing
- blast hole drilling
- micropiling
- core drilling
- exploratory drilling
- diamond drilling

### Mounty® 90 H package

- Mounty® 90 H, feed length 1.30, 1.80 or 2.4 m
- Hydroclamp HZ 100
- Rotary head NL3
- Remote controlled panel SF3
- Rack back stay
- Powerpack KSD91



## Technical specifications

### Mounty® 90 H

#### Specifications



#### Operating weight excavator t

<b>Weight <sup>1</sup></b>	kg	> 50
<b>Oil requirement</b>	l/min / bar	55 / 200
<b>Feed/Pullback force</b>	kN	12
<b>Torque max.</b>	daNm	140
<b>Feed stroke</b>	mm	1'300 / 1'800 / 2'300
<b>Dimensions (LxBxH)</b>	mm	2'160 / 580 / 500
<b>Drill feed profile</b>	BL	90
<b>Fixing plate for scaffolding tube</b>		inclusive
<b>Rotary plate for scaffolding tube</b>		inclusive
<b>Clamping device</b>	mm	25 – 146
<b>Top hammer</b>	daNm	103
<b>Rotary head</b>	daNm	140
<b>Double head</b>	daNm	

#### Deliverable with

<b>Hydraulic control panel</b>	inclusive
<b>Radio or cable remote control</b>	optional
<b>Radio remote control with display</b>	
<b>Anti-jamming automatic</b>	
<b>Adjustable percussion mechanism</b>	
<b>Injection pump control</b>	optional
<b>Thread synchronization</b>	
<b>Slew 90° (mechanical)</b>	optional
<b>Breaking device</b>	optional
<b>Drill guide</b>	inclusive
<b>Rack back stay</b>	inclusive

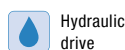
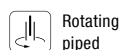
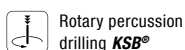
#### Requirements hydraulic power units

<b>Weight</b>	kg	390 / 700
<b>Engine power</b>	kW	18 / 43
<b>Fuel</b>		Diesel / Electric
<b>Hose length</b>	m	20 + 7

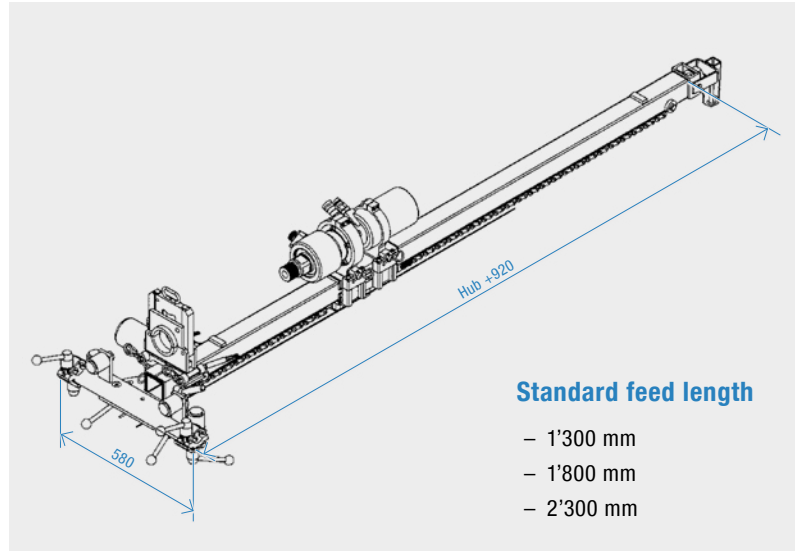
#### Drilling methods

	Application ideal	Application conditionally possible				
<b>Blast hole / Rock drilling</b>	ø mm	33	45	57	76	89
<b>KSB® Anchor drilling</b>	ø anchor	R32	R38	R51	T76	T114
<b>Rotary-/Down-the-hole (DTH) drilling</b>	ø mm	70	90	140	178	250
<b>Cased drilling</b>	ø mm	114	139	168	178	219
<b>Core drilling</b>	ø mm	100	131	146	200	254
<b>Injection port</b>	inch	3/8"				

1. Without safety device according to standard EN16228



## System drawing



# Portable Drill Feeds

## Overview



INOX

Mounty® 90 L



INOX

Mounty® 90 H



INOX

Mounty® 91 H



INOX

Mounty® 92 H

### Specifications



<b>Operating weight excavator t</b>			> 2	> 3	
<b>Weight <sup>1</sup></b>	kg	> 45	> 50	> 110	> 140
<b>Oil requirement</b>	l/min / bar		55 / 200	60 / 200	100 / 200
<b>Feed/Pullback force</b>	kN	9	12	20	40
<b>Torque max.</b>	daNm	90	140	180	500
<b>Feed stroke</b>	mm	1'300 / 1'800 / 2'300	1'300 / 1'800 / 2'300	1'300 / 1'800 / 2'300	1'300 / 1'800 / 2'300
<b>Dimensions (LxBxH)</b>	mm	2'160 / 580 / 650	2'160 / 580 / 500	2'220 / 580 / 500	2'315 / 584 / 600
<b>Drill feed profile</b>	BL	90	90	91	92
<b>Fixing plate for scaffolding tube</b>		inclusive	inclusive	inclusive	inclusive
<b>Rotary plate for scaffolding tube</b>		inclusive	inclusive	inclusive	inclusive
<b>Clamping device</b>	mm		25 – 146	25 – 146	25 – 181
<b>Top hammer</b>	daNm	35	103	103 / 150	150
<b>Rotary head</b>	daNm	90	140	180	800
<b>Double head</b>	daNm				

### Deliverable with

<b>Hydraulic control panel</b>		inclusive	inclusive	inclusive	inclusive
<b>Radio or cable remote control</b>		optional	optional	optional	optional
<b>Radio remote control with display</b>					
<b>Anti-jamming automatic</b>					
<b>Adjustable percussive mechanism</b>					
<b>Injection pump control</b>		optional	optional	optional	optional
<b>Thread synchronization</b>					
<b>Slew 90° (mechanical)</b>		optional	optional	optional	optional
<b>Breaking device</b>		optional	optional	optional	optional
<b>Drill guide</b>		inclusive	inclusive	inclusive	inclusive
<b>Rack back stay</b>		inclusive	inclusive	inclusive	inclusive

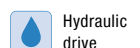
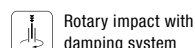
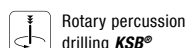
### Requirements hydraulic power units

<b>Weight</b>	kg		390 / 700	390 / 700	>510
<b>Engine power</b>			18 / 43	18 / 43	(18) / 43
<b>Fuel</b>					
<b>Hose length</b>	m		20 + 7	20 + 7	20 + 7

### Drilling methods Application ideal Application conditionally possible

<b>Blast hole / Rock drilling</b>	ø mm	33	45	57	76	89	33	45	57	76	89	33	45	57	76	89	33	45	57	76	89
<b>KSB® Anchor drilling</b>	ø anchor	R32	R38	R51	T76	T114	R32	R38	R51	T76	T114	R32	R38	R51	T76	T114	R32	R38	R51	T76	T114
<b>Rotary-Down-the-hole (DTH) drilling</b>	ø mm	70	90	140	178	250	70	90	140	178	250	70	90	140	178	250	70	90	140	178	250
<b>Cased drilling</b>	ø mm	114	139	168	178	219	114	139	168	178	219	114	139	168	178	219	114	139	168	178	219
<b>Core drilling</b>	ø mm	100	131	146	200	254	100	131	146	200	254	100	131	146	200	254	100	131	146	200	254
<b>Injection port</b>	inch		3/8"				3/8"					3/8"					3/8"				

1. Without safety device according to standard EN16228





# Mounty® Portable Drill Feeds

Safety in the mountains

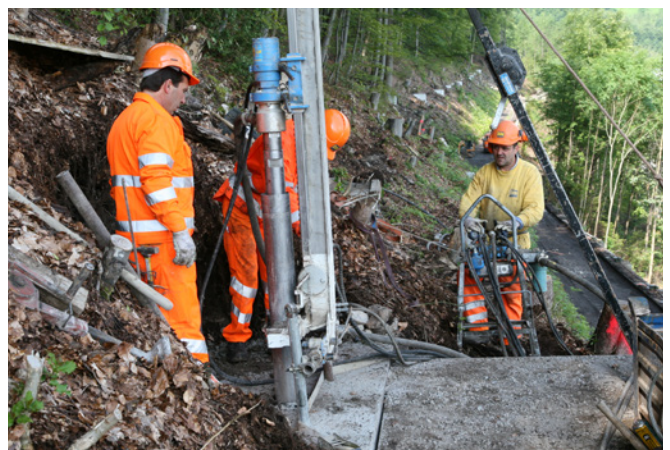


The problem of installing protection devices was presented to **Lumesa SA**. Previously, these structures were carried out with tracked machines. As these were not always sufficient, a portable machine was designed.

Several elements were available to be assembled into a model system for machines of 3 sizes. These components ranged from 40 kg to 50 kg for lighter machines (torque 1'400 Nm) and from 80 kg to 120 kg for heavy machines (torque 5'000 Nm).

Not to forget the tools, drilling and lining tubes, which can easily weigh one tonne! This construction requires that rods, hammers and tubes are perfectly matched to the drill.

The drilling process is different compared to tracked machines. Therefore, we offer advice, the necessary tools and equipment for each application.





# Universal Mounting Plate

For Drill Feeds Type 91 H and 92 H



## Hydraulic rotary head

### UAP 90

### UAP 91

### UAP 92

<b>Weight</b>	kg	190	280	370
<b>Swivel moment</b>	Nm	2'700	4'500	6'800
<b>Holding moment</b>	Nm	5'400	9'000	13'600

## With treadle rollover

<b>Swivel element</b>		± 90°	± 90°	± 90°
<b>Rollover</b>		360°	360°	360°
<b>Pullout cylinder</b>	mm	200–1'000	200–1'000	200–1'000

For use from various types of equipment, simple base plate matched to carrier equipment. For use in the calotte area, the drill feed can be turned 180° in a few easy steps thanks to the sliding rails on the rear.

The control can be either manual or with a radio control.



## Point (Shoe)



Article no.	BL90	BL91	BL92
901630	x	x	
921640			x*

\* without BL92 HBV

## Point (Rail)



Article no.	BL90	BL91	BL92
911630		x	
921650			x*

\* without BL92 HBV